

GREEN CITY EXTENSION

Work Progress Report as on 29/02/2024



BIRD EYE VIEW OF GREEN CITY EXTENSION



BLOCK- EMERALD OUTER VIEW



KRISHNA HOMES
BUILDERS & DEVELOPERS
सुन्दर आवास, सुखद निवास



BLOCK- EMERALD GROUND FLOOR ENTRANCE & LIFT AREA



KRISHNA HOMES
BUILDERS & DEVELOPERS
सुन्दर आवास, सुखद निवास



BLOCK- EMERALD GROUND FLOOR STILT PARKING AREA



BLOCK- EMERALD GROUND FLOOR TO FIRST FLOOR STAIRS AND CORRIDOR AREA



BLOCK- EMERALD
FIRST FLOOR FLAT NO. 101



BLOCK- EMERALD
FIRST FLOOR FLAT NO. 101



BLOCK- EMERALD
FIRST FLOOR FLAT NO. 102



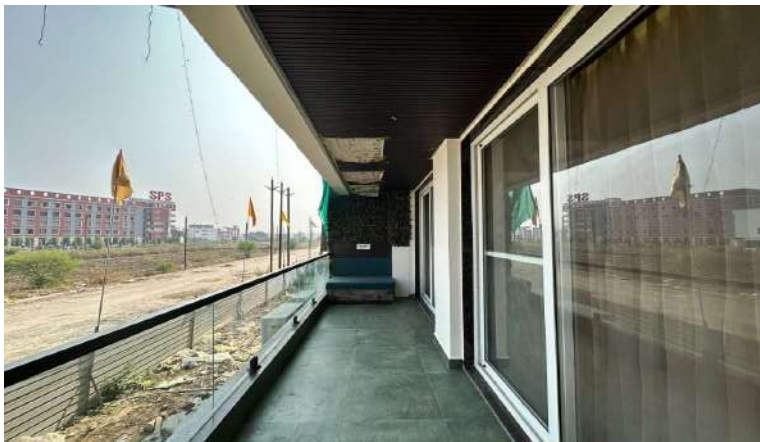
BLOCK- EMERALD
FIRST FLOOR FLAT NO. 102



BLOCK- EMERALD
FIRST FLOOR FLAT NO. 103
SAMPLE FLAT



BLOCK- EMERALD
FIRST FLOOR FLAT NO. 103
SAMPLE FLAT



•Structure Work:-	100% work completed
•Brick work:-	100% work completed
•Internal Plaster :-	100% work completed
•Flooring:-	100% work completed
•Window Granite fixing :-	100% work completed
•Electrical Work:-	100% work completed
•Plumbing Work:-	100% work completed
•Door Paneling work:-	100% work completed
•Window UPVC Fixing:-	100% work completed
•Modular Kitchen:-	100% work completed
•Railing:-	100% work completed
•Door Shutter:-	100% work completed
•CP Sanitary Fittings :-	100% work completed
•Electrical Switch board fixing:-	100% work completed
•Internal Painting :-	100% work completed
•Texture Paint:-	100% work completed
•Balcony False Ceiling:-	100% work completed
•External Plaster:-	Work in Progress
•External Paint:-	Not Started

BLOCK- EMERALD
FIRST FLOOR TO SECOND FLOOR
STAIRS AND CORRIDOR AREA



BLOCK- EMERALD
SECOND FLOOR FLAT NO. 201



BLOCK- EMERALD
SECOND FLOOR FLAT NO. 202



BLOCK- EMERALD SECOND FLOOR FLAT NO. 203



Construction Update: Second Floor Emerald Flat No. 201, 202, 203 Status (Feb-2024):- **75% work completed**

•Structure Work:-	100% work completed
•Brick work:-	100% work completed
•Internal Plaster :-	100% work completed
•Flooring:-	80% work completed
•Window Granite fixing :-	100% work completed
•Electrical Work:-	100% work completed
•Plumbing Work:-	100% work completed
•Door Paneling work:-	100% work completed
•Window UPVC Fixing:-	40% work completed
•Modular Kitchen:-	33% work completed
•Railing:-	Not Started
•Door Shutter:-	100% work completed
•CP Sanitary Fittings :-	Not Started
•Electrical Switch board fixing:-	50% work completed
•Internal Painting :-	Not Started
•Texture Paint:-	Not Started
•Balcony False Ceiling:-	Not Started
•External Plaster:-	Work in Progress
•External Paint:-	Not Started

BLOCK- EMERALD
SECOND FLOOR TO THIRD FLOOR
STAIRS AND CORRIDOR AREA



BLOCK- EMERALD
THIRD FLOOR FLAT NO. 301



BLOCK- EMERALD
THIRD FLOOR FLAT NO. 302



BLOCK- EMERALD
THIRD FLOOR FLAT NO. 303



•Structure Work:-	100% work completed
•Brick work:-	100% work completed
•Internal Plaster :-	100% work completed
•Flooring:-	80% work completed
•Window Granite fixing :-	100% work completed
•Electrical Work:-	100% work completed
•Plumbing Work:-	100% work completed
•Door Paneling work:-	100% work completed
•Window UPVC Fixing:-	15% work completed
•Modular Kitchen:-	Not Started
•Railing:-	Not Started
•Door Shutter:-	100% work completed
•CP Sanitary Fittings :-	Not Started
•Electrical Switch board fixing:-	Not Started
•Internal Painting :-	Not Started
•Texture Paint:-	Not Started
•Balcony False Ceiling:-	Not Started
•External Plaster:-	Work in Progress
•External Paint:-	Not Started



BLOCK- EMERALD
FOURTH FLOOR FLAT NO. 401



BLOCK- EMERALD
FOURTH FLOOR FLAT NO. 402



BLOCK- EMERALD FOURTH FLOOR FLAT NO. 403



**Construction Update: Fourth Floor
Emerald Flat No. 401, 402, 403
Status (Feb-2024):-
65% work completed**

•Structure Work:-	100% work completed
•Brick work:-	100% work completed
•Internal Plaster :-	100% work completed
•Flooring:-	80% work completed
•Window Granite fixing :-	100% work completed
•Electrical Work:-	100% work completed
•Plumbing Work:-	100% work completed
•Door Paneling work:-	100% work completed
•Window UPVC Fixing:-	15% work completed
•Modular Kitchen:-	Not Started
•Railing:-	Not Started
•Door Shutter:-	Not Started
•CP Sanitary Fittings :-	Not Started
•Electrical Switch board fixing:-	Not Started
•Internal Painting :-	Not Started
•Texture Paint:-	Not Started
•Balcony False Ceiling:-	Not Started
•External Plaster:-	Work in Progress
•External Paint:-	Not Started

**BLOCK- EMERALD
FOURTH FLOOR TO FIFTH FLOOR
STAIRS AND CORRIDOR AREA**



**BLOCK- EMERALD
FIFTH FLOOR FLAT NO. 501**



BLOCK- EMERALD
FIFTH FLOOR FLAT NO. 502

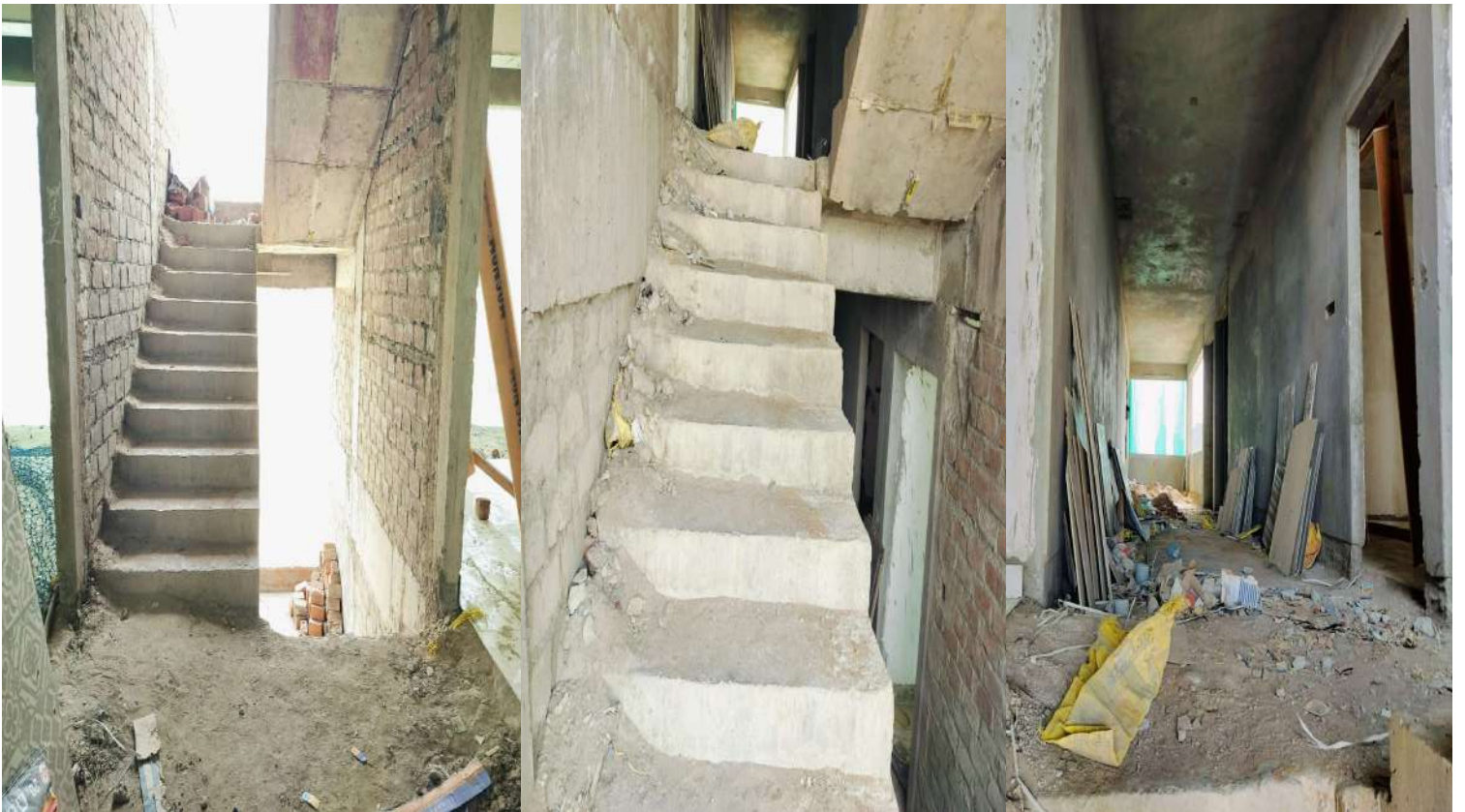


BLOCK- EMERALD
FIFTH FLOOR FLAT NO. 503

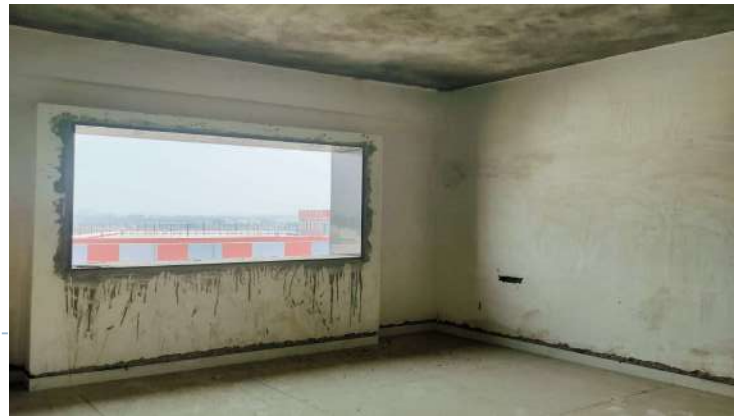


•Structure Work:-	100% work completed
•Brick work:-	100% work completed
•Internal Plaster :-	100% work completed
•Flooring:-	80% work completed
•Window Granite fixing :-	100% work completed
•Electrical Work:-	100% work completed
•Plumbing Work:-	100% work completed
•Door Paneling work:-	80% work completed
•Window UPVC Fixing:-	15% work completed
•Modular Kitchen:-	Not Started
•Railing:-	Not Started
•Door Shutter:-	Not Started
•CP Sanitary Fittings :-	Not Started
•Electrical Switch board fixing:-	Not Started
•Internal Painting :-	Not Started
•Texture Paint:-	Not Started
•Balcony False Ceiling:-	Not Started
•External Plaster:-	Work in Progress
•External Paint:-	Not Started

BLOCK- EMERALD
FIFTH FLOOR TO SIXTH FLOOR
STAIRS AND CORRIDOR AREA



BLOCK- EMERALD SIXTH FLOOR FLAT NO. 601



BLOCK- EMERALD SIXTH FLOOR FLAT NO. 602



BLOCK- EMERALD SIXTH FLOOR FLAT NO. 603



Construction Update: Sixth Floor Emerald
Flat No. 601, 602, 603
Status (Feb-2024):-
65% work completed

•Structure Work:-	100% work completed
•Brick work:-	100% work completed
•Internal Plaster :-	100% work completed
•Flooring:-	80% work completed
•Window Granite fixing :-	100% work completed
•Electrical Work:-	100% work completed
•Plumbing Work:-	100% work completed
•Door Paneling work:-	40% work completed
•Window UPVC Fixing:-	15% work completed
•Modular Kitchen:-	Not Started
•Railing:-	Not Started
•Door Shutter:-	Not Started
•CP Sanitary Fittings :-	Not Started
•Electrical Switch board fixing:-	Not Started
•Internal Painting :-	Not Started
•Texture Paint:-	Not Started
•Balcony False Ceiling:-	Not Started
•External Plaster:-	Work in Progress
•External Paint:-	Not Started

BLOCK- EMERALD
SIXTH FLOOR TO SEVENTH FLOOR
STAIRS AND CORRIDOR AREA



BLOCK- EMERALD
SEVENTH FLOOR FLAT NO. 701



BLOCK- EMERALD
SEVENTH FLOOR FLAT NO. 702



BLOCK- EMERALD
SEVENTH FLOOR FLAT NO. 703



•Structure Work:-	100% work completed
•Brick work:-	100% work completed
•Internal Plaster :-	100% work completed
•Flooring:-	80% work completed
•Window Granite fixing :-	100% work completed
•Electrical Work:-	100% work completed
•Plumbing Work:-	100% work completed
•Door Paneling work:-	Not Started
•Window UPVC Fixing:-	15% work completed
•Modular Kitchen:-	Not Started
•Railing:-	Not Started
•Door Shutter:-	Not Started
•CP Sanitary Fittings :-	Not Started
•Electrical Switch board fixing:-	Not Started
•Internal Painting :-	Not Started
•Texture Paint:-	Not Started
•Balcony False Ceiling:-	Not Started
•External Plaster:-	Work in Progress
•External Paint:-	Not Started

BLOCK- EMERALD

SEVENTH FLOOR TO EIGHT FLOOR

STAIRS AND CORRIDOR AREA



BLOCK- EMERALD EIGHT FLOOR FLAT NO. 801



BLOCK- EMERALD EIGHT FLOOR FLAT NO. 801



BLOCK- EMERALD EIGHT FLOOR FLAT NO. 802



BLOCK- EMERALD EIGHT FLOOR FLAT NO. 802



BLOCK- EMERALD EIGHT FLOOR FLAT NO. 803



BLOCK- EMERALD EIGHT FLOOR FLAT NO. 803



•Structure Work:-	100% work completed
•Brick work:-	100% work completed
•Internal Plaster :-	100% work completed
•Flooring:-	Not Started
•Window Granite fixing :-	Not Started
•Electrical Work:-	100% work completed
•Plumbing Work:-	100% work completed
•Door Paneling work:-	Not Started
•Window UPVC Fixing:-	Not Started
•Modular Kitchen:-	Not Started
•Railing:-	Not Started
•Door Shutter:-	Not Started
•CP Sanitary Fittings :-	Not Started
•Electrical Switch board fixing:-	Not Started
•Internal Painting :-	Not Started
•Texture Paint:-	Not Started
•Balcony False Ceiling:-	Not Started
•External Plaster:-	Work in Progress
•External Paint:-	Not Started

BLOCK- EMERALD
TOP FLOOR STAIRS AND TERRACE



Status :- 80 % work completed

•Structure Work:-	100% work completed
•Brick work:-	100% work completed
•Internal Plaster :-	100% work completed
•Flooring:-	70% work completed
•Window Granite fixing :-	90% work completed
•Electrical Work:-	90% work completed
•Plumbing Work:-	90% work completed
•Door Paneling work:-	70% work completed
•Window UPVC Fixing:-	30% work completed
•Modular Kitchen:-	30% work completed
•Railing:-	10% work completed
•Door Shutter:-	30% work completed
•CP Sanitary Fittings :-	10% work completed
•Electrical Switch board fixing:-	10% work completed
•Internal Painting :-	10% work completed
•Texture Paint:-	10% work completed
•Balcony False Ceiling:-	10% work completed
•External Plaster:-	Work in Progress
•External Paint:-	Not Started

**BLOCK- JADE
OUTER VIEW**



**BLOCK- JADE
GROUND FLOOR TO FIRST
FLOOR STAIRS AND CORRIDOR
AREA**



**BLOCK- JADE
FIRST FLOOR FLAT NO. 101**



BLOCK- JADE
FIRST FLOOR FLAT NO. 102



BLOCK- JADE
FIRST FLOOR FLAT NO. 103



BLOCK- JADE FIRST FLOOR FLAT NO. 104



**Construction Update: First Floor
JADE Flat No. 101, 102, 103, 104
Status (Feb-2024):-
45% work completed**

•Structure Work:-	100% work completed
•Brick work:-	100% work completed
•Internal Plaster :-	Not Started
•Flooring:-	Not Started
•Window Granite fixing :-	Not Started
•Electrical Work:-	100% work completed
•Plumbing Work:-	30% work completed
•Door Paneling work:-	Not Started
•Window UPVC Fixing:-	Not Started
•Modular Kitchen:-	Not Started
•Railing:-	Not Started
•Door Shutter:-	Not Started
•CP Sanitary Fittings :-	Not Started
•Electrical Switch board fixing:-	Not Started
•Internal Painting :-	Not Started
•Texture Paint:-	Not Started
•Balcony False Ceiling:-	Not Started
•External Plaster:-	Not Started
•External Paint:-	Not Started

**BLOCK- JADE
FIRST FLOOR TO SECOND
FLOOR STAIRS AND CORRIDOR
AREA**



**BLOCK- JADE
SECOND FLOOR FLAT NO. 201**



BLOCK- JADE SECOND FLOOR FLAT NO. 202



BLOCK- JADE SECOND FLOOR FLAT NO. 203



BLOCK- JADE SECOND FLOOR FLAT NO. 204



**Construction Update: Second Floor
JADE Flat No. 201, 202, 203, 204
Status (Feb-2024):-
40% work completed**

•Structure Work:-	100% work completed
•Brick work:-	100% work completed
•Internal Plaster :-	Not Started
•Flooring:-	Not Started
•Window Granite fixing :-	Not Started
•Electrical Work:-	Not Started
•Plumbing Work:-	30% work completed
•Door Paneling work:-	Not Started
•Window UPVC Fixing:-	Not Started
•Modular Kitchen:-	Not Started
•Railing:-	Not Started
•Door Shutter:-	Not Started
•CP Sanitary Fittings :-	Not Started
•Electrical Switch board fixing:-	Not Started
•Internal Painting :-	Not Started
•Texture Paint:-	Not Started
•Balcony False Ceiling:-	Not Started
•External Plaster:-	Not Started
•External Paint:-	Not Started

**BLOCK-JADE
SECOND FLOOR TO THIRD
FLOOR STAIRS AND CORRIDOR
AREA**



**BLOCK- JADE
THIRD FLOOR FLAT NO. 301**



BLOCK- JADE
THIRD FLOOR FLAT NO. 302



BLOCK- JADE
THIRD FLOOR FLAT NO. 303



BLOCK- JADE THIRD FLOOR FLAT NO. 304



Construction Update: Third Floor JADE Flat No. 301, 302, 303, 304 Status (Feb-2024):- 40% work completed

•Structure Work:-	100% work completed
•Brick work:-	100% work completed
•Internal Plaster :-	Not Started
•Flooring:-	Not Started
•Window Granite fixing :-	Not Started
•Electrical Work:-	Not Started
•Plumbing Work:-	30% work completed
•Door Paneling work:-	Not Started
•Window UPVC Fixing:-	Not Started
•Modular Kitchen:-	Not Started
•Railing:-	Not Started
•Door Shutter:-	Not Started
•CP Sanitary Fittings :-	Not Started
•Electrical Switch board fixing:-	Not Started
•Internal Painting :-	Not Started
•Texture Paint:-	Not Started
•Balcony False Ceiling:-	Not Started
•External Plaster:-	Not Started
•External Paint:-	Not Started

**BLOCK-JADE
THIRD FLOOR TO FOURTH
FLOOR STAIRS AND CORRIDOR
AREA**



**BLOCK-JADE
FOURTH FLOOR
ALL FLATS**



•Structure Work:-	100% work completed
•Brick work:-	Not Started
•Internal Plaster :-	Not Started
•Flooring:-	Not Started
•Window Granite fixing :-	Not Started
•Electrical Work:-	Not Started
•Plumbing Work:-	Not Started
•Door Paneling work:-	Not Started
•Window UPVC Fixing:-	Not Started
•Modular Kitchen:-	Not Started
•Railing:-	Not Started
•Door Shutter:-	Not Started
•CP Sanitary Fittings :-	Not Started
•Electrical Switch board fixing:-	Not Started
•Internal Painting :-	Not Started
•Texture Paint:-	Not Started
•Balcony False Ceiling:-	Not Started
•External Plaster:-	Not Started
•External Paint:-	Not Started



BLOCK- JADE FIFTH FLOOR ALL FLATS



Construction Update: Fifth Floor
JADE Flat No. 501, 502, 503, 504
Status (Feb-2024):-
30% work completed

•Structure Work:-	100% work completed
•Brick work:-	Not Started
•Internal Plaster :-	Not Started
•Flooring:-	Not Started
•Window Granite fixing :-	Not Started
•Electrical Work:-	Not Started
•Plumbing Work:-	Not Started
•Door Paneling work:-	Not Started
•Window UPVC Fixing:-	Not Started
•Modular Kitchen:-	Not Started
•Railing:-	Not Started
•Door Shutter:-	Not Started
•CP Sanitary Fittings :-	Not Started
•Electrical Switch board fixing:-	Not Started
•Internal Painting :-	Not Started
•Texture Paint:-	Not Started
•Balcony False Ceiling:-	Not Started
•External Plaster:-	Not Started
•External Paint:-	Not Started

BLOCK- JADE SIXTH FLOOR ALL FLATS



Construction Update: Sixth Floor
JADE Flat No. 601, 602, 603, 604
Status (Feb-2024):-
20% work completed

•Structure Work:-	40% work completed
•Brick work:-	Not Started
•Internal Plaster :-	Not Started
•Flooring:-	Not Started
•Window Granite fixing :-	Not Started
•Electrical Work:-	Not Started
•Plumbing Work:-	Not Started
•Door Paneling work:-	Not Started
•Window UPVC Fixing:-	Not Started
•Modular Kitchen:-	Not Started
•Railing:-	Not Started
•Door Shutter:-	Not Started
•CP Sanitary Fittings :-	Not Started
•Electrical Switch board fixing:-	Not Started
•Internal Painting :-	Not Started
•Texture Paint:-	Not Started
•Balcony False Ceiling:-	Not Started
•External Plaster:-	Not Started
•External Paint:-	Not Started



Construction Update: Seventh Floor
JADE Flat No. 701, 702, 703, 704
Status (Feb-2024):-
10% work completed

•Structure Work:-	Work in Progress
•Brick work:-	Not Started
•Internal Plaster :-	Not Started
•Flooring:-	Not Started
•Window Granite fixing :-	Not Started
•Electrical Work:-	Not Started
•Plumbing Work:-	Not Started
•Door Paneling work:-	Not Started
•Window UPVC Fixing:-	Not Started
•Modular Kitchen:-	Not Started
•Railing:-	Not Started
•Door Shutter:-	Not Started
•CP Sanitary Fittings :-	Not Started
•Electrical Switch board fixing:-	Not Started
•Internal Painting :-	Not Started
•Texture Paint:-	Not Started
•Balcony False Ceiling:-	Not Started
•External Plaster:-	Not Started
•External Paint:-	Not Started

Status :- 50 % work completed

•Structure Work:-	70% work completed
•Brick work:-	40% work completed
•Internal Plaster :-	Work in Progress
•Flooring:-	Not Started
•Window Granite fixing :-	Not Started
•Electrical Work:-	10% work completed
•Plumbing Work:-	30% work completed
•Door Paneling work:-	Not Started
•Window UPVC Fixing:-	Not Started
•Modular Kitchen:-	Not Started
•Railing:-	Not Started
•Door Shutter:-	Not Started
•CP Sanitary Fittings :-	Not Started
•Electrical Switch board fixing:-	Not Started
•Internal Painting :-	Not Started
•Texture Paint:-	Not Started
•Balcony False Ceiling:-	Not Started
•External Plaster:-	Not Started
•External Paint:-	Not Started

For More Details – Visit
www.krishnahomesbhopal.com